

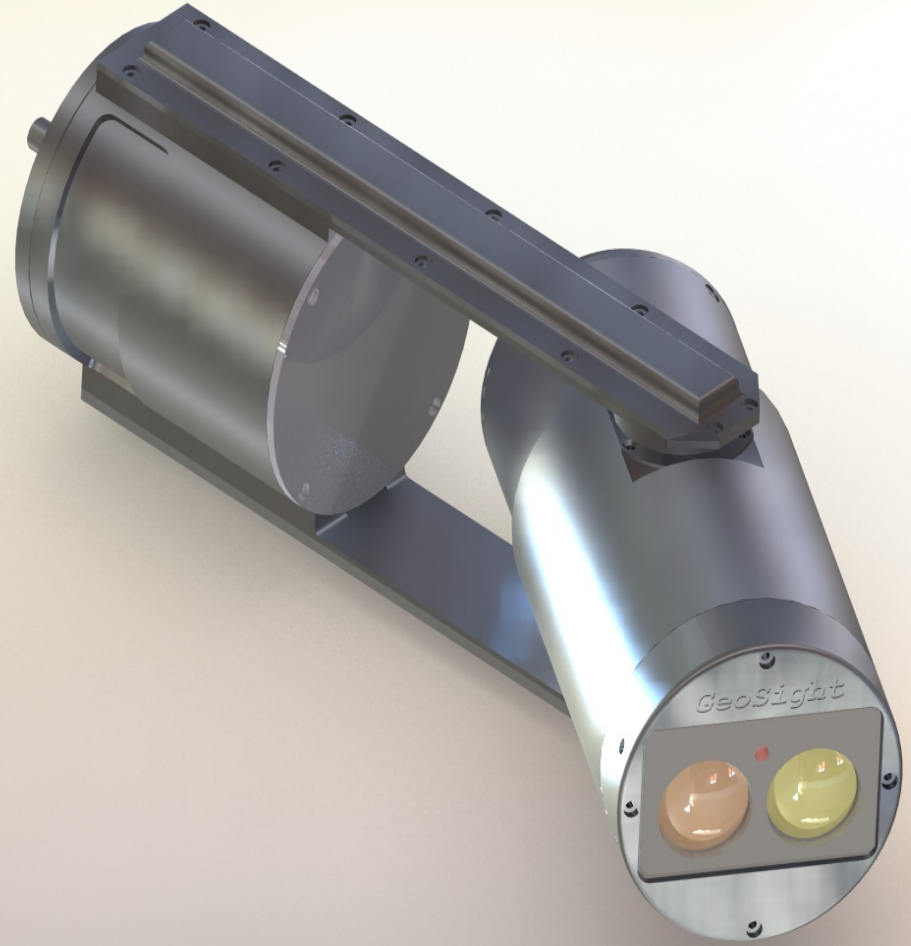


Stope Reconciliation via Blast Analysis

- GeoSight Mine Scanner (GMS)
and Stope Analysis
John D. Lupton
GeoSight Inc.
- Oshawa, Canada
- 905-436-6528
email: info@geosight.ca
- www.geosight.ca



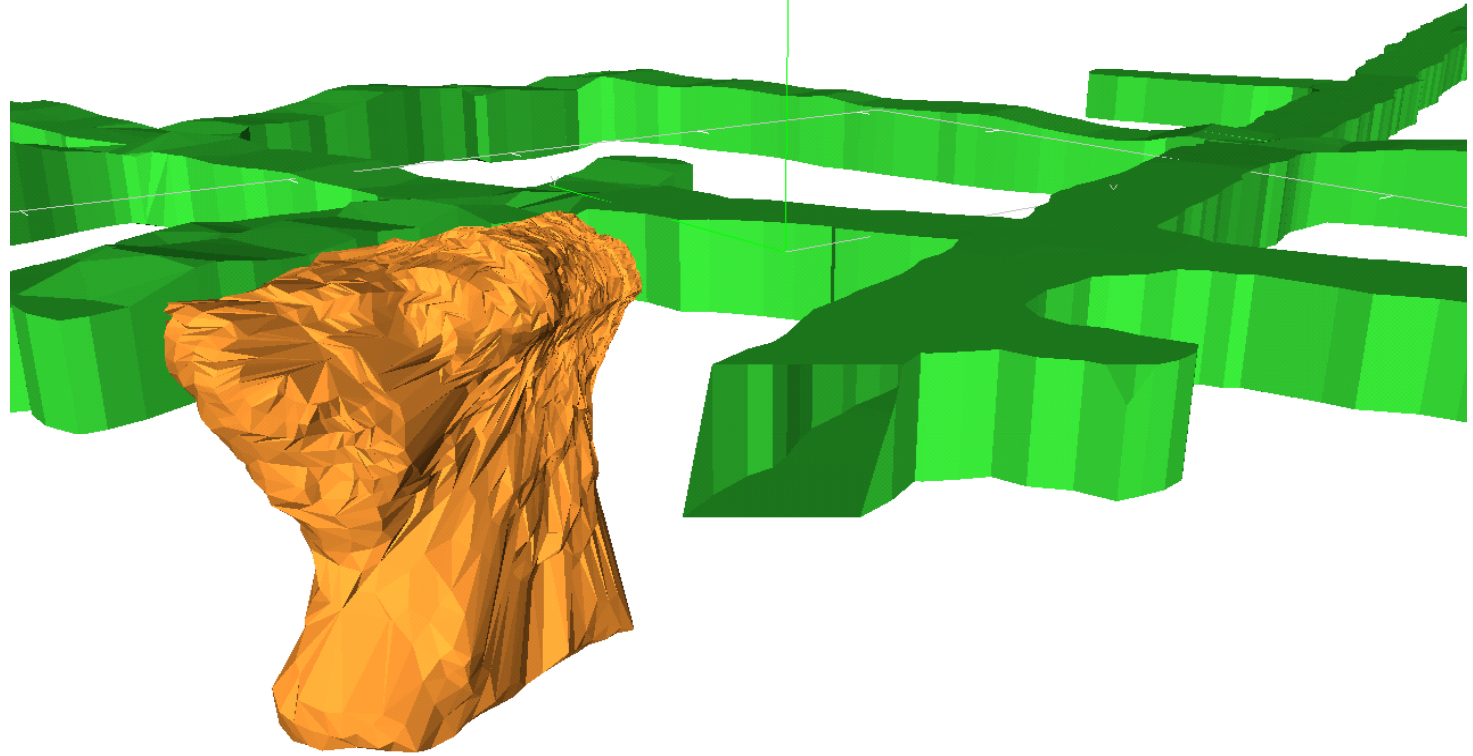
GeoSight Mine Scanner

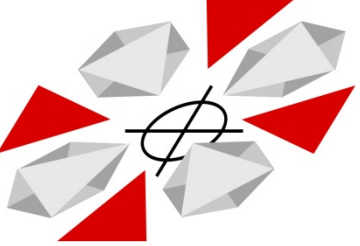




GeoSight

GVP Version: 2.5 Update 3





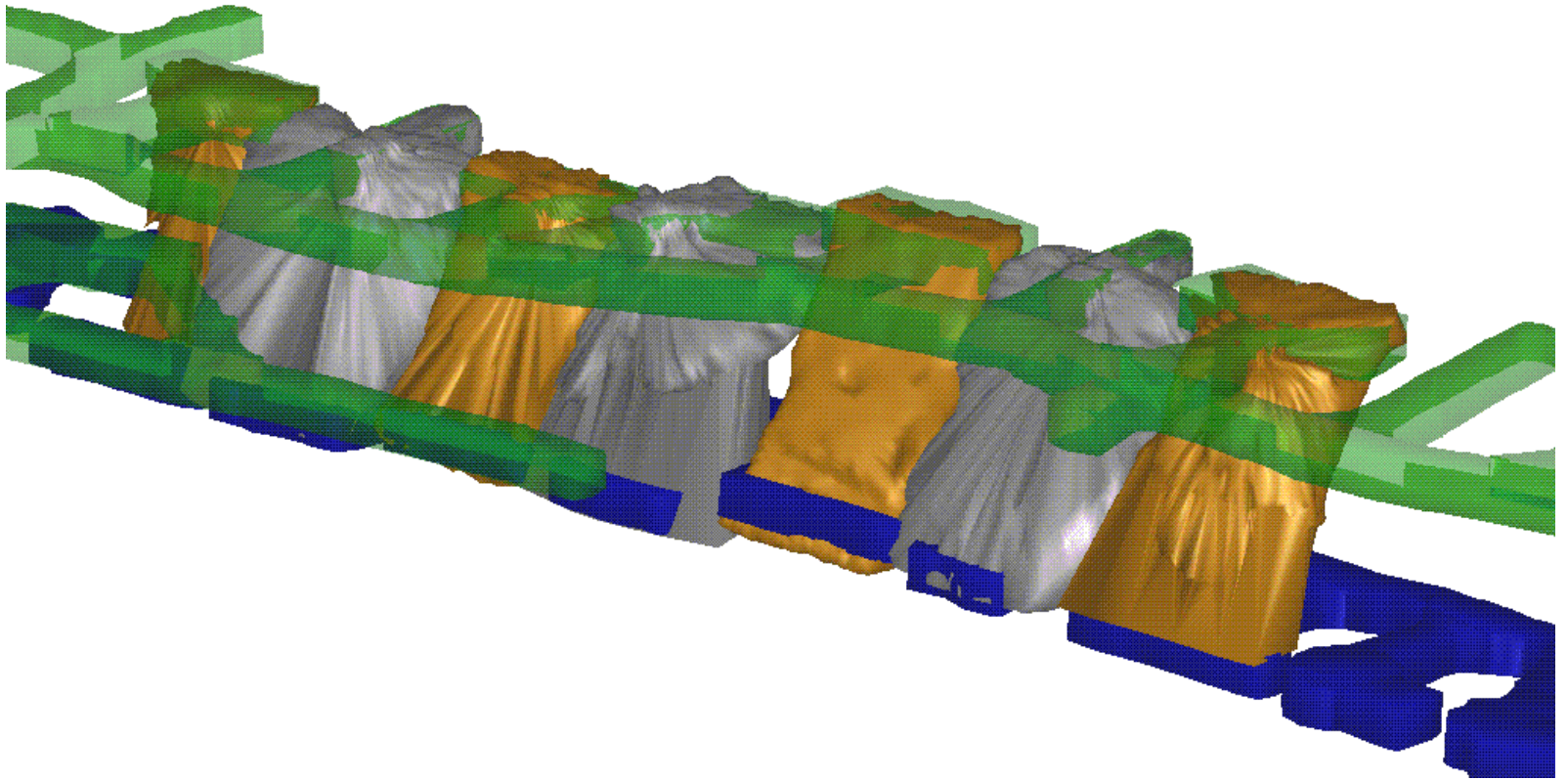
GeoSight





GeoSight

Stope database



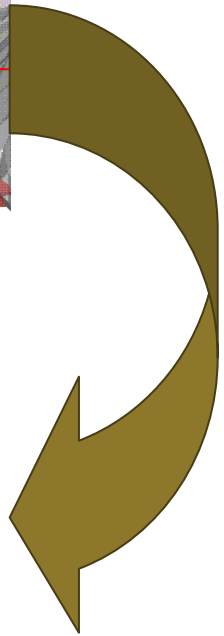
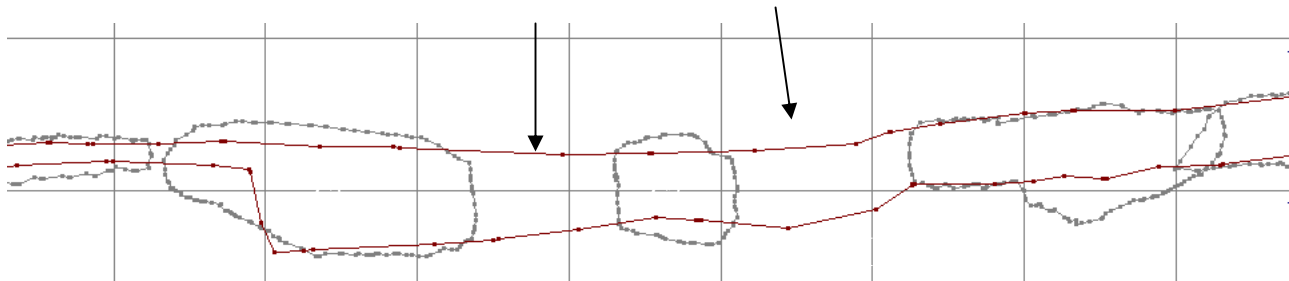
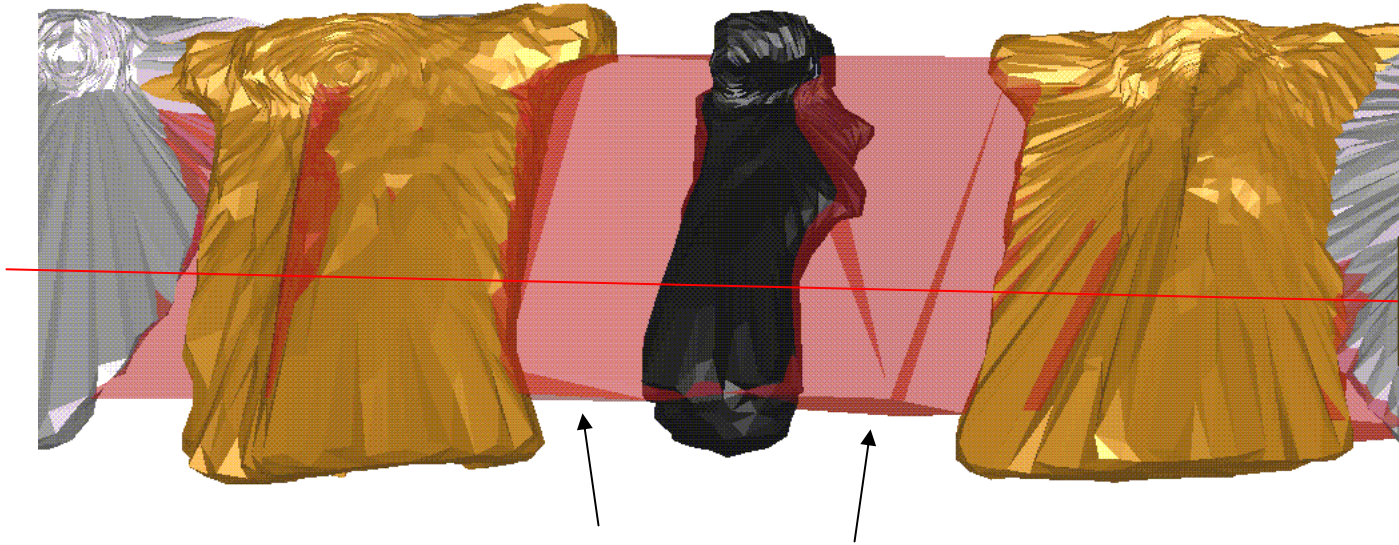


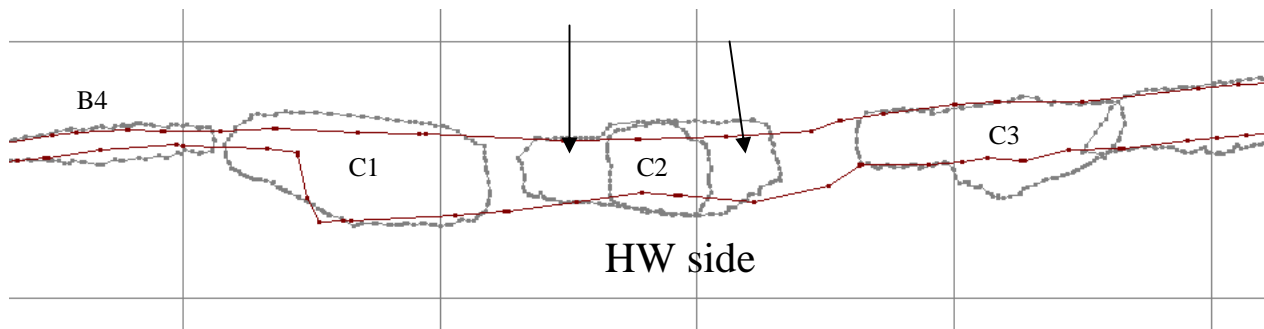
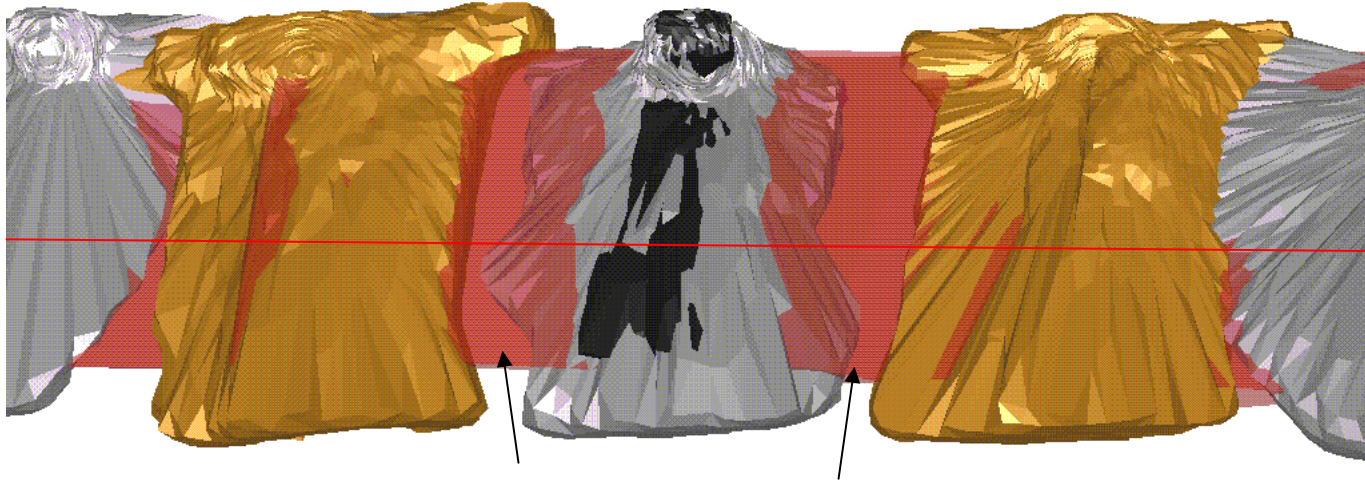
GeoSight

- Compare scan data with mine reserves
- Dilution % = $\frac{\text{HW and FW Waste}}{\text{Actual Ore Mined (tons)}}$
- Compare Scan data with blast rings
- Maximize recovery (dilution control)



GeoSight

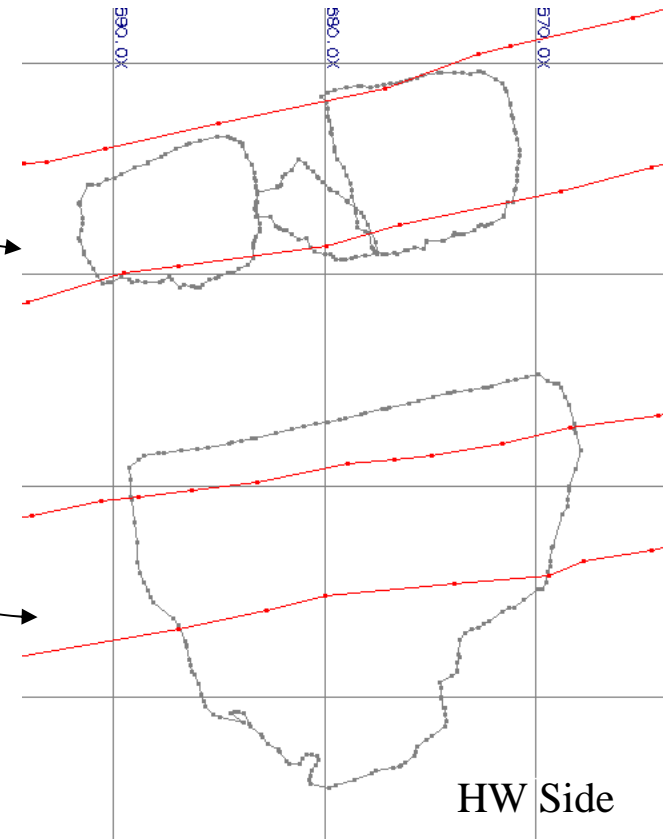
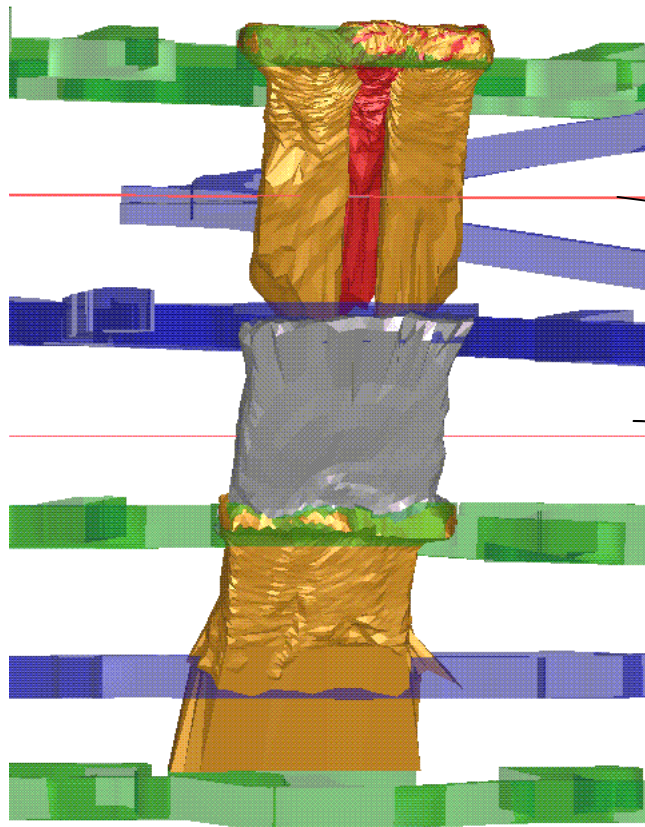


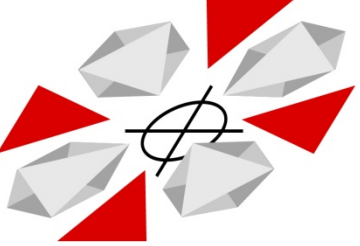




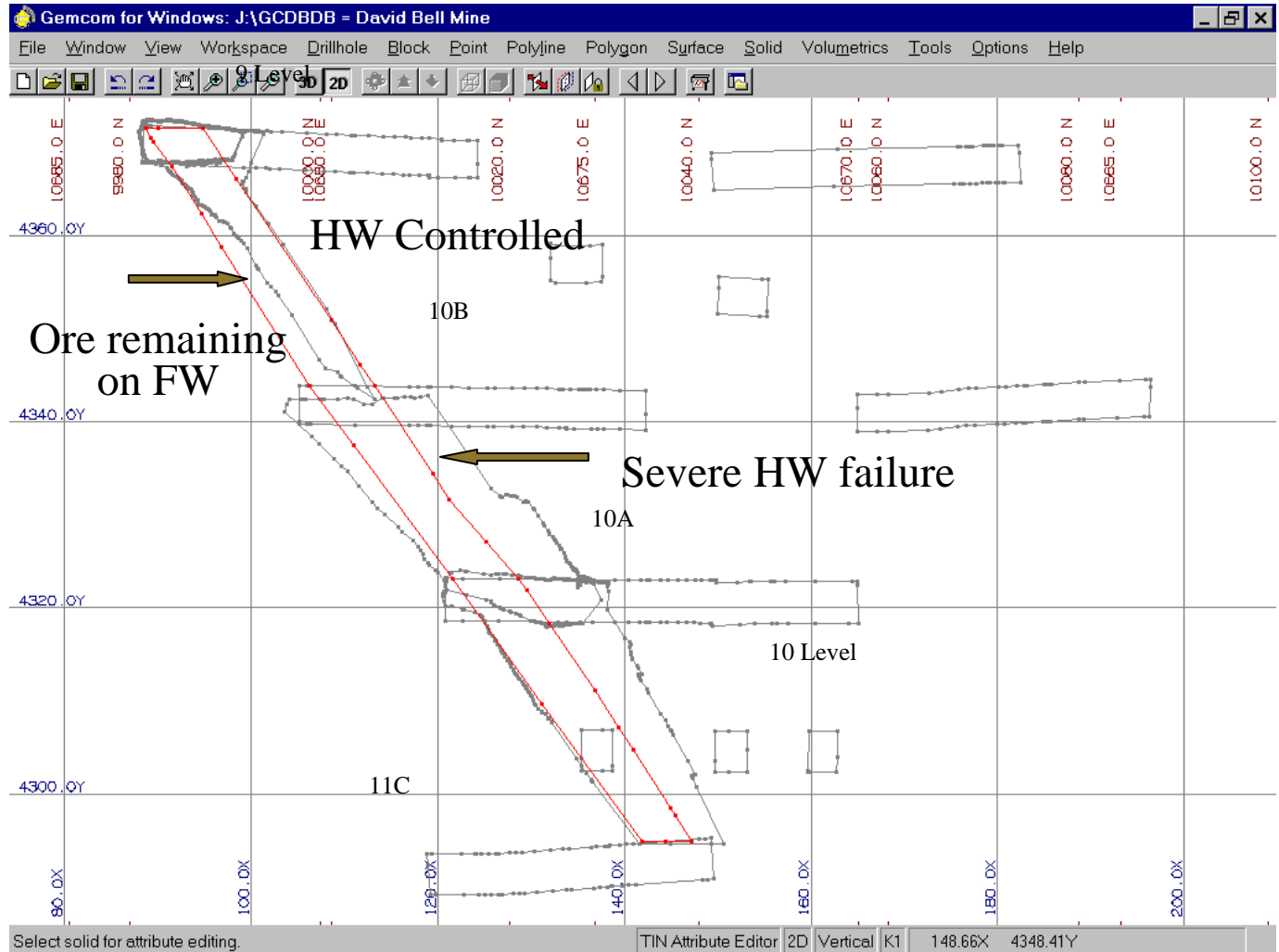
GeoSight

Exact volumes for Backfill can be determined



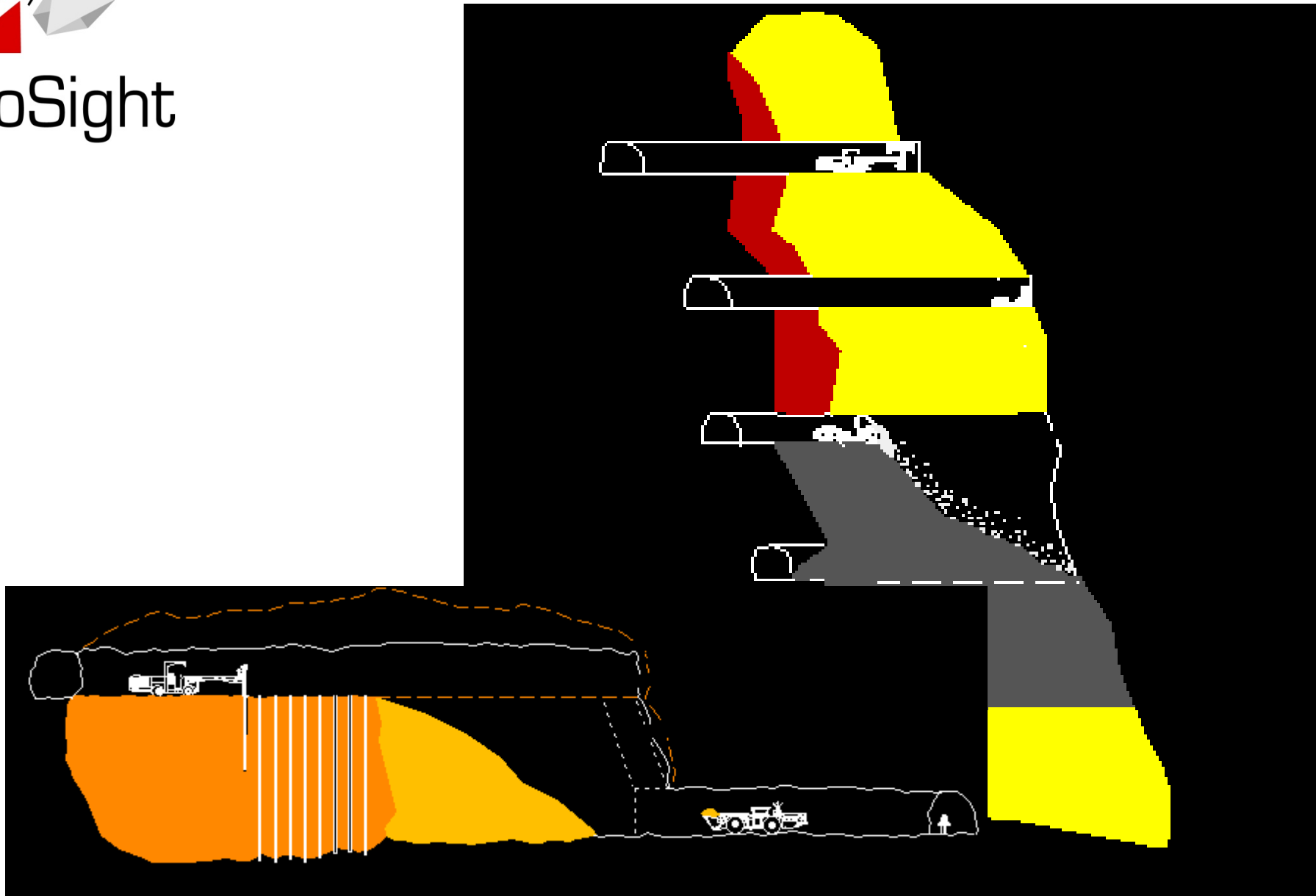


GeoSight





Strategic Blasting B (1 of 3)





GeoSight

Induced Errors

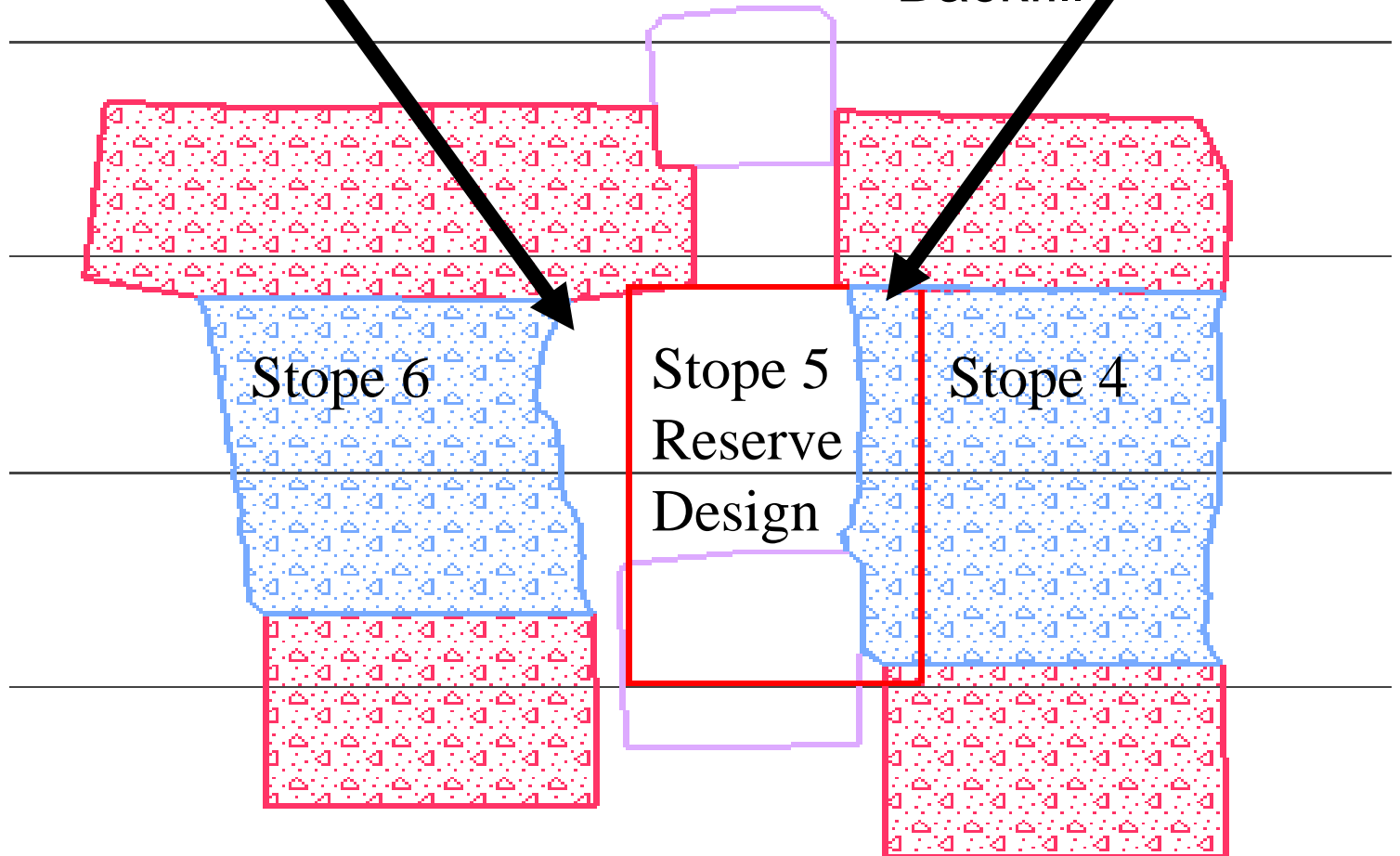
- Reserves - stope blocks don't match design
- Blast hole - dilution assumed to be as designed



GeoSight

Under Break 22 % Air

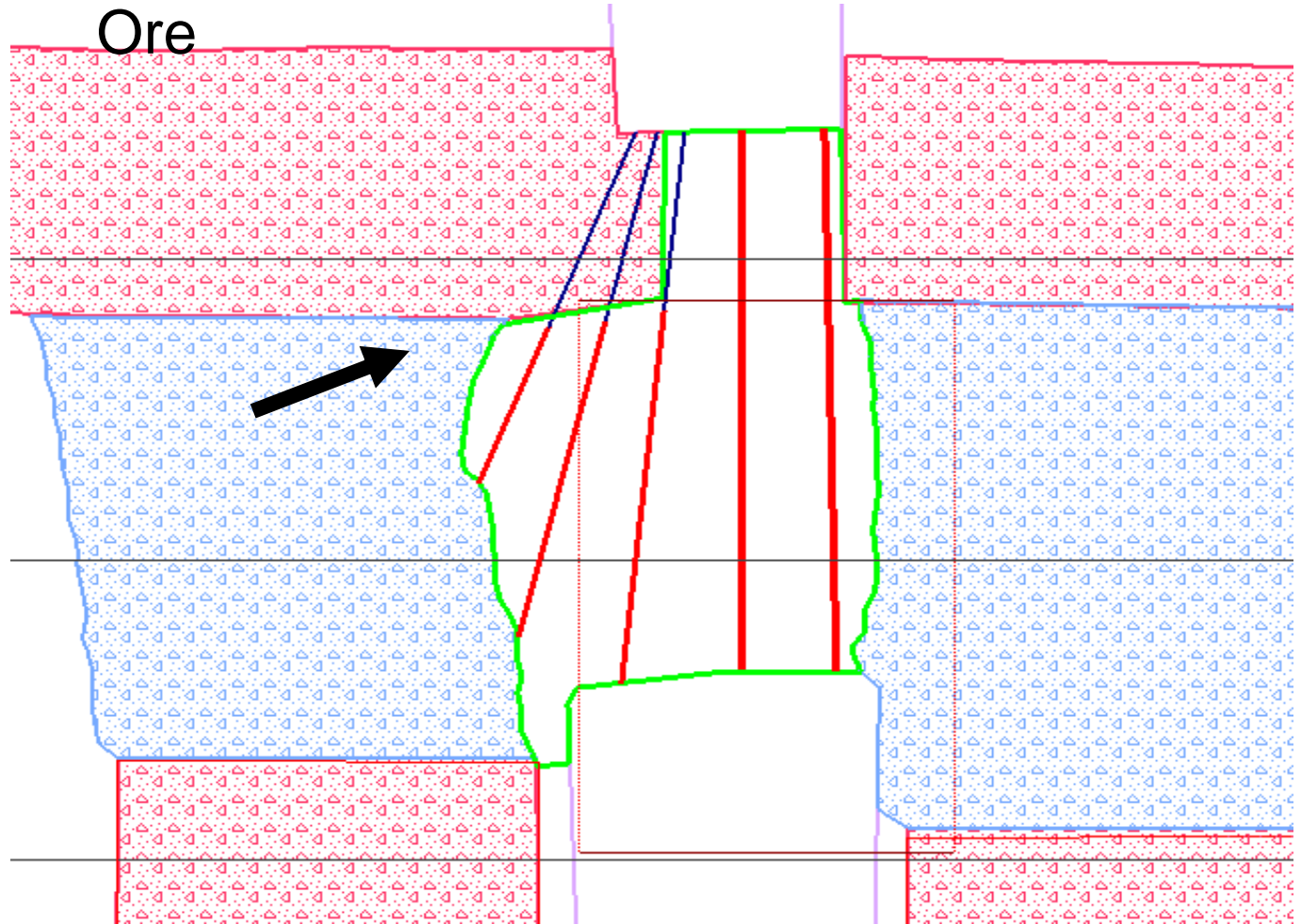
19 % Backfill Over Break





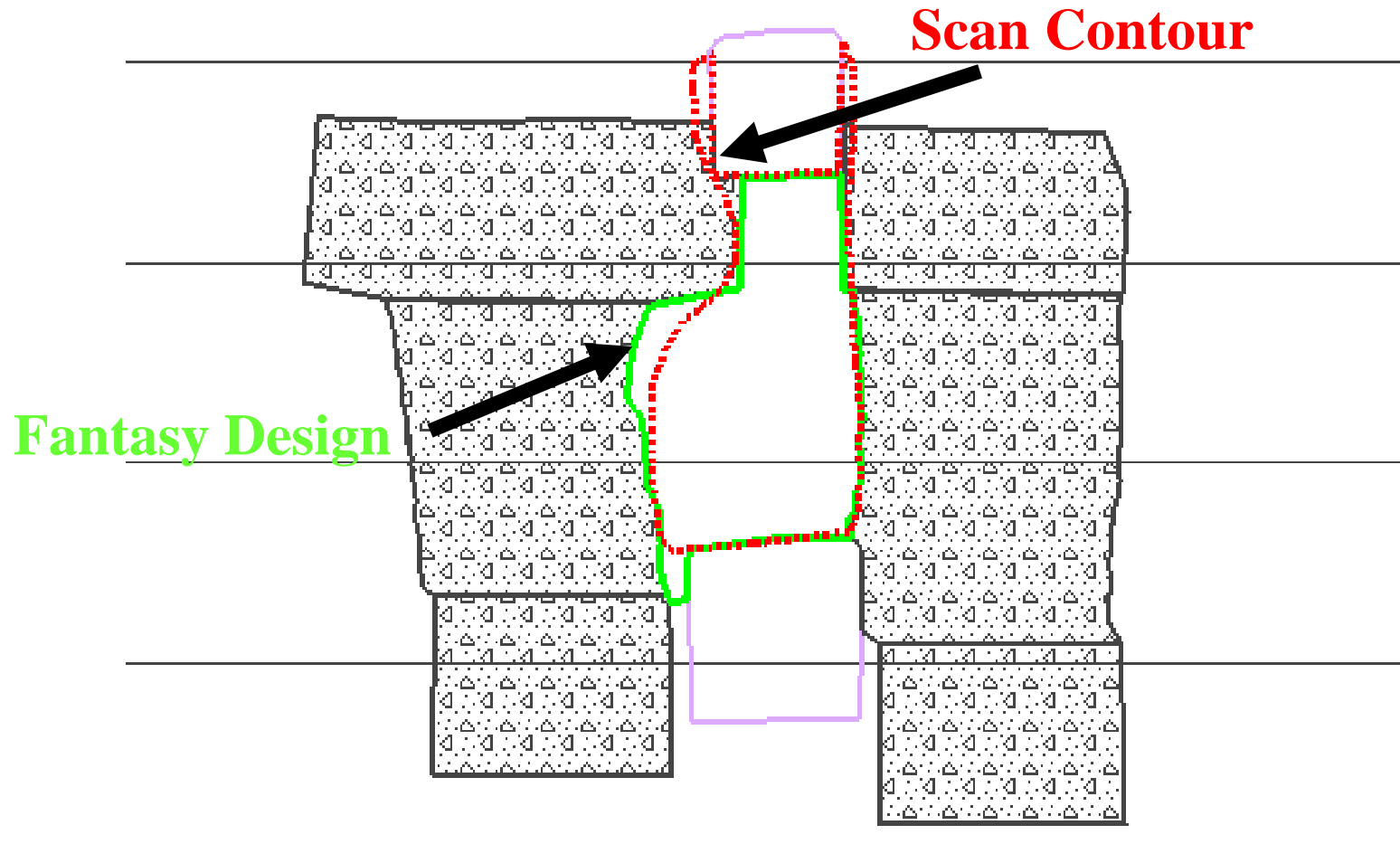
Proposed Secondary Design

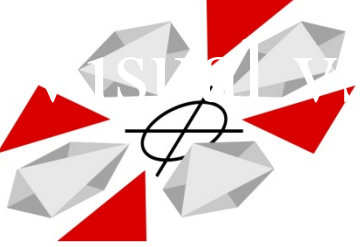
33 % Additional
Ore





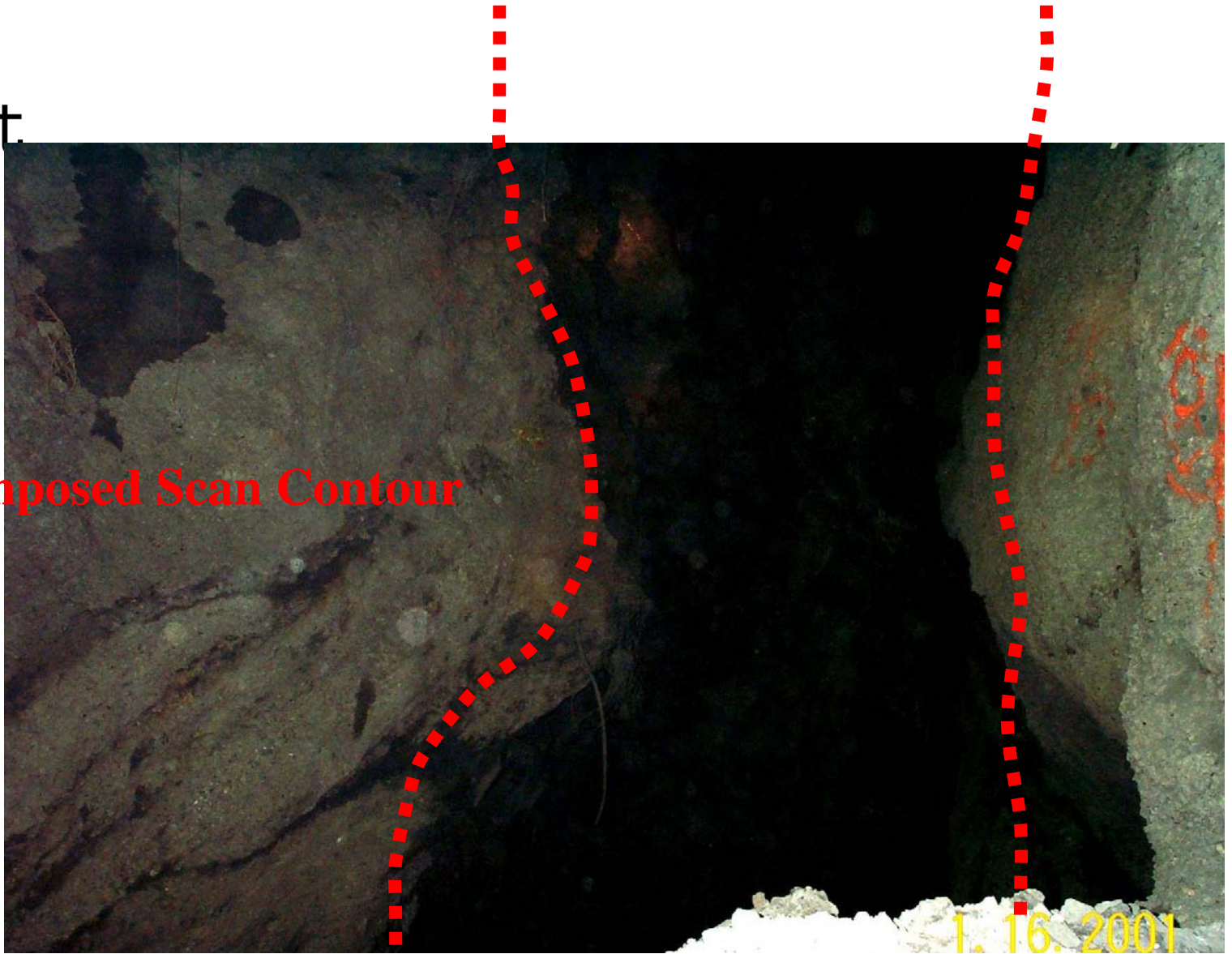
	FINAL DESIGN	STOPE CMS	DIFF.
TONS	3,040	3,370	10.9%
BACKFILL	0	150	5.0%
GRADE	0.344	0.337	-2.0%

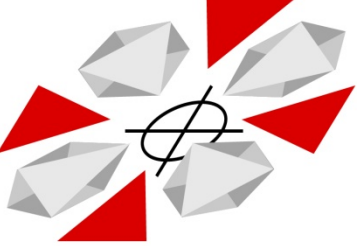




GeoSight

Superimposed Scan Contour





GeoSight

Conclusion

Reconciliation Review

- Compare mine reserves with: stope production data, blast design, and Laser scan data
- Reserves - stope blocks don't match design
- Blast hole - dilution assumed to be as designed
- Not all stopes get surveyed